

TEEMA

台灣優良中小企業 2021-2022
Taiwan Outstanding SME 2021-2022

Electronic Parts

Electronic Part
Automotive
Electronic

Information Security

Alot
Others
Automotive Electronic Parts LED
Communication Others
Automotive Electronic Parts LED
Communication Others
Automotive Electronic Parts LED
Communication Others
Automotive Electronic Parts LED
Communication Others
Automotive Electronic Parts LED
Communication Others



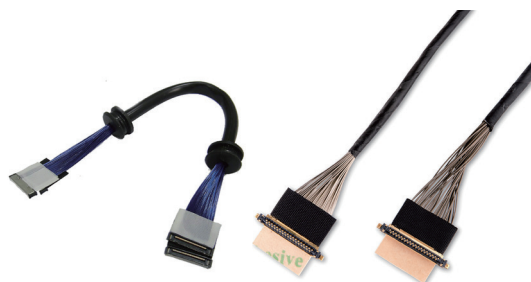
積極、創新、第一

萬旭電業股份有限公司成立於 1987 年，為臺灣上櫃公司（股票代號 6134），致力於資訊與通訊裝置的連接線組開發，並積極開發毫米波雷達等創新模組。以求全球市場為目標，追求技術創新，整合內外部資源，以規模生產創造成本優勢，成為電子裝置內部配線組立、外部訊號連接線、無線天線、毫米波雷達及 SMT 精密加工模組的領導廠商。

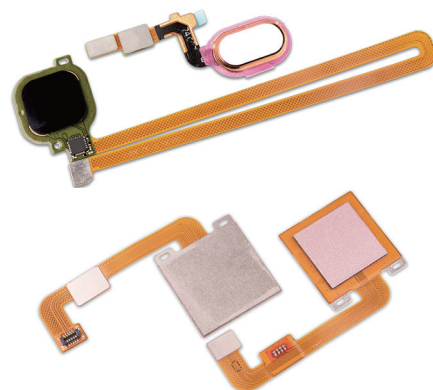
產品應用觸及至消費、醫療、車用、工控和通訊產業，充分展現精密加工為基礎的創新模組首選開發者。

為了充分提供全球市場動態並擴展事業版圖，萬旭除了台灣的 AI 自動化生產線外，分別於香港、廣東東莞、江蘇蘇州、江蘇泗陽等地皆設立公司與工廠，以臺北為集團營運中心，以客制化研發、彈性生產、即時交貨、全球運籌來提供客戶高附加價值的產品與優質的服務。

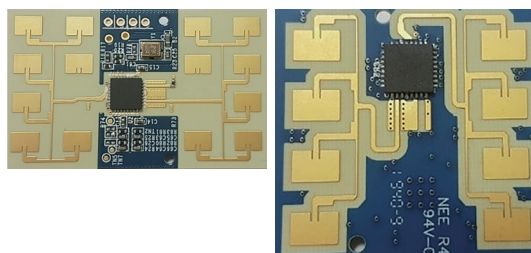
萬旭與日本住友取得**極細同軸線技術**正式跨入生產，廣泛應用於電腦、電視、通訊、電器用品中最常見的。大量投入研發在更微小細化、技術門檻高的利基型極細同軸線市場應用開發，加上近年來各式新興科技促使如 AR、智慧型家用機器人、物聯網應用等產品興起，感受到市場對於更微小化、高性能的極細同軸線需求大幅興起，將積極與應用端客戶合作開發，共同研發新一代超微小化的高頻低衰 0.25mm pitch 線組。產品體積發產越來越要求輕薄微小的趨勢下，有著高屏蔽、柔軟、體積小特性的極細同軸線乘勢興起。



指紋辨識模組為身生物辨識技術的一種，透過採集指紋來為自己打造獨一無二的個人 ID。在資訊安全意識抬頭的年代，人們對於資安的需求日漸增長，而指紋模組就是在這時空背景下誕生的技術。指紋模組主要分為兩種類型，光學式及電容式，依照各自的採檢特性廣泛的運用於生活當中，如電腦、手機、電子門鎖甚至式超商的 ATM。指紋模組儲存指紋特徵資料所需要的空間是目前所有生物辨識技術中最小的，這也是它成為目前手機與電腦標配的最主要的原因。



毫米波雷達模組為一物聯網感測器，包含移動、遠近、速度、角度和距離感測，模組特性為不受惡劣環境影響，且具程式化功能，主要應用在智能汽車、智慧交通、視訊監控、智能家居等產業，產品線分為 24GHz 與 60GHz 兩大類，目前 24GHz 產品廣泛應用於車用尾門感控偵測、車用哨兵模式、停車場闔門感測、路邊停車位偵測等應用，然而 60GHz 雷達應用於車內存在感測系統、自駕公車跌倒偵測等應用。



公司概要 - 基本情報

公司地址：新北市五股區新北產業園區五工六路 72 號 3~5 樓
電話：+886-2-2298-8066 傳真：+886-2-2298-8131
URL：https://www.wanshih.com.tw 公司員工人數：2000 人
資本額：NTD 7.6 億 設立時間：June, 1987
公司代表人：張程欽
Email：sales@wanshih.com.tw

業務概要

萬旭願景主要以精密加工為基礎的創新模組首選開發者，區分為三大事業處 - 配線事業處、SMT 事業處和毫米波事業處。

Action, Innovation, and Leadership

Established in 1987, Wanshih Electronic Co., Ltd., is a 50/50 joint venture company by Wonderful Hi-Tech Co., Ltd, Taiwan and Asahi Tsushi, Japan. As the years went on, we became a leading OEM/ODM manufacturer of micro coaxial assembly for tier-one notebook computer and mobile phone companies. In order to offer a timely support to our customers, and meet their target of continuous cost improvement, we established our production line at Dongguan in 1990, and Suzhou in 1994.

Currently, the total employees are about 2,000 in Wanshih Group. In viewing the technology trend of telecommunication, Wanshih is dedicated in the key components development of extremely micro coaxial LVDS and wireless communication.

Based on the capability of self-developing automatic production facility, Wanshih has been ranked at the top of the supply of micro coaxial cable, wireless antenna, and RF cable assembly for global market. In 2004, we are participating in the product and market development of WiFi smart antenna and COF (chip on FPC), which are regarded as the cutting-edge key components for the next generation consumer, medical, automobile, industrial and communication field. We have stuck to a philosophy of "Action, Innovation, and Leadership" and committed to our customers on Continuous Improvements of Service, Technology, Quality, and Cost.

Wanshih continually developed **smaller and smaller micro coaxial LVDS technology**. The special technology for state-of-the-art LVDS cable with 0.5mm pitch connector designed in a wide range of computers, TVs, communications, and electrical appliances that are quite mature and comprehensive market.

The application and development of the niche market for extreme micro coaxial cable with small size and high technology has promoted the rise of products such as AR, smart home robots, medical and Internet of Things applications. The market demand for more miniaturized, high-performance and extremely small micro coaxial cables has risen sharply. Wanshih actively cooperates with application-side development customers to joint develop a new generation of ultra-miniature, high frequency, low-attenuation 0.25mm pitch LVDS cable sets like photos.

Because of the structural characteristics of micro coaxial cables with four multi-layered structure from the inside to the outside, micro coaxial cables are generally thicker, so customer used our cables to install in related applications of small limit area. For example, high-precision consumer electronics have become popular in recent years. the volume of similar products become rapidly increasing for extremely light, thin and small cable. The micro coaxial cables with high shielding, softness, and small size are taking advantage of the trend.

The **Fingerprint Module** is one kind of biometric technologies that creates a unique personal ID by scanning our fingerprints. With the requests for information security increasing, the fingerprint technology was grown up to be mature. The Fingerprint technology is manly divided into two types – optical and capacitive. According to their way of scanning fingerprints, they are widely used in our daily life such as laptops, smart phones, electric lock system and even ATMs in every convenience stores. On the other hand, the needs for memory capacity of fingerprint data storing are less than any kinds of biometric technologies. That is also the main reason why the fingerprints modules can be set up laptops and smart phones currently.

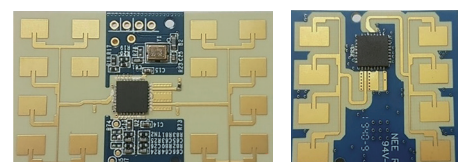
The **mmWave radar module** is an IOT sensor that has the functionalities of moving, proximity, velocity and distance sense. The modules could be used in harsh environment and is a programmable sensor that could apply in different industries. The main fields of applications are Smart vehicle, Smart traffic, Surveillance and Smart home. There are two types of product - 24GHz and 60GHz series. The main applications of 24GHz series are vehicle kick to open tailgate \ vehicle sentry mode \ barrier gate \ street parking sensing, etc. The main applications of 60GHz series are presence sensor in the car (Hot Cars Act) \ falling detection in autonomous shuttle, etc.



micro coaxial LVDS cable



Fingerprint Module



mmWave radar module

Company Profile and Basic Information

Address: 3~5F 72 WU KONG 6TH RD., WU KU INDUSTRIAL DISTRICT, NEW TAIPEI CITY, TAIWAN, R.O.C.
TEL : +886-2-2298-8066 FAX: +886-2-2298-8131
URL : <https://en.wanshih.com.tw/> No. of employees: 2,000 staffs
Capital: USD25 million Year founded: June, 1987
Name of representative: Lake Chang
Email: sales@wanshih.com.tw

Business Overview

Wanshih vision is that the preferred developer of innovative modules based on precision machining. The main three business units – cable assembly division, SMT division and millimeter wave division.



TEEMA

台灣優良中小企業 2021-2022
Taiwan Outstanding SME

聯絡方式：

台灣區電機電子工業同業公會 協同商務創新委員會
台灣台北市內湖區11490民權東路六段109號6樓
TEL:886-2-8792-6666 ext.260 FAX:886-2-8792-6135
EMAIL:teema@teema.org.tw
URL:<http://www.teema.org.tw>

CONTACT US:

Taiwan Electrical and Electronic Manufacturers' Association
6F, No. 109, Sec. 6, Minquan E. Rd., Neihu Dist., Taipei City 114, Taiwan (R.O.C.)
TEL:886-2-8792-6666 ext.260 FAX:886-2-8792-6135
EMAIL:teema@teema.org.tw
URL:<http://www.teema.org.tw>